



6 Lawrence Mansions, Lordship Place
Chelsea SW3

Soames
Victoria Soames – Contact London

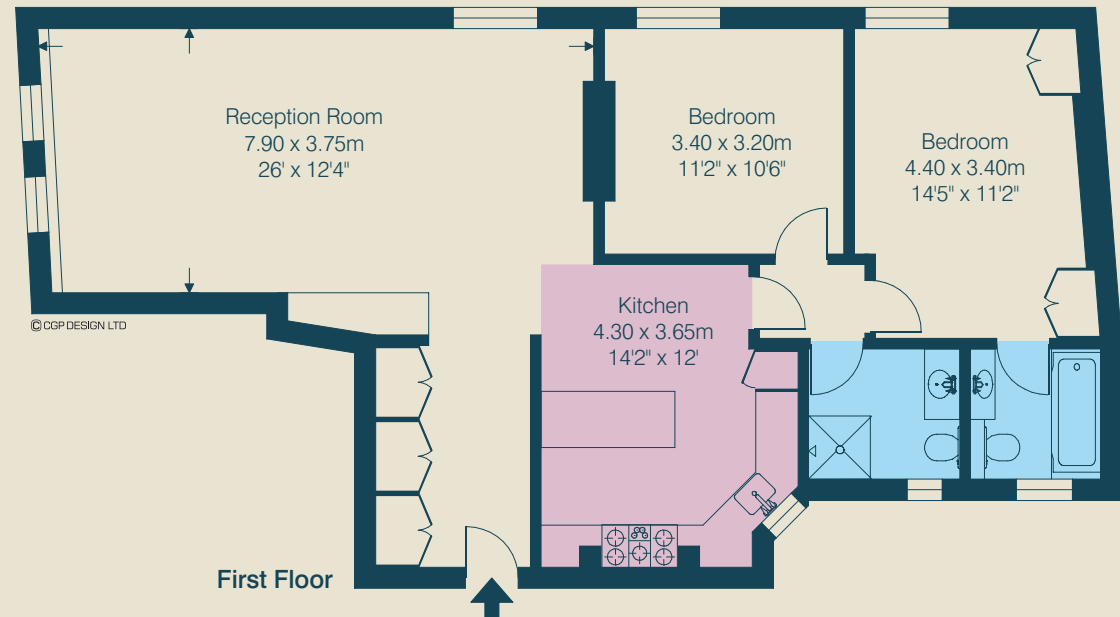
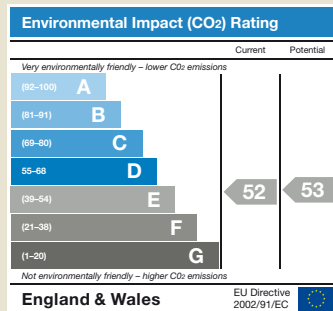
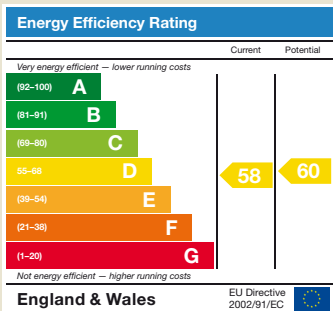
6 Lawrence Mansions, Lordship Place Chelsea SW3

A well presented bright and spacious two double bedroom flat in this popular mansion block in the heart of 'Old Chelsea'.

Entrance Hall : Double Reception Room
Kitchen : Master Bedroom with en suite
Bathroom : 2nd Bedroom : Shower Room
Basement Storage : Communal Courtyard

Tenure: Share of Freehold
Service Charge: approximately £1,910 per annum
Ground Rent: Peppercorn
Price: £1,200,000 Subject to Contract

Approximate Gross Internal Area
974 sq feet – 90.5 sq metres



Soames

Victoria Soames – Contact London

26 Old Church Street London SW3 5BY

020 7351 3311

www.soameslondon.com

Victoria Soames Ltd. and Contact London Ltd. for themselves and for the vendor of this property, whose agents Victoria Soames Ltd. and Contact London Ltd. are, give notice that 1. These particulars do not constitute any part of an offer or contract. 2. All statements contained in these particulars as to this property are made without responsibility on the part of Victoria Soames Ltd., Contact London Ltd. or the vendor. 3. None of the statements contained in these particulars as to this property are relied on as statements of representations of fact. 4. Any intending purchaser must satisfy himself by inspection or otherwise as to the correctness of each of the statements contained in these particulars. 5. The vendor does not make or give, and neither Victoria Soames Ltd., Contact London Ltd. nor any person in the employ of Victoria Soames Ltd. and Contact London Ltd., has any authority to make or give any representation or warranty whatever in relation to this property. June 2010. CGP9137.FL01W Photography & brochure by cgpdesign.com 020 7222 7222