

25 Old Church Street  
Chelsea SW3



## 25 Old Church Street Chelsea SW3



A family house with a large garden in the heart of 'Old Chelsea'.

### Accommodation

- Entrance hall
- Drawing room
- Kitchen
- Dining room
- Family room
- Master bedroom with en suite bathroom

- 4 further bedrooms
- 2 bathrooms
- Study
- 2 cloakrooms
- Utility room
- Boot room
- Wine cellar
- Large garden

### Tenure

Freehold

### Local Authority

The Royal Borough of Kensington and Chelsea

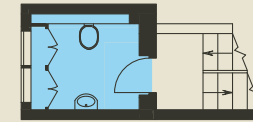
### Price

£4,750,000

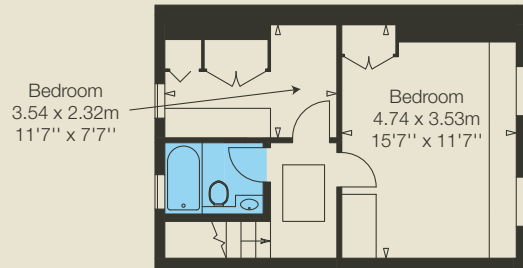




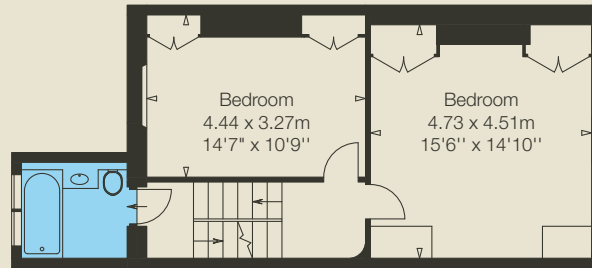
Approximate Gross Internal Area  
3,111 sq ft / 289 sq m



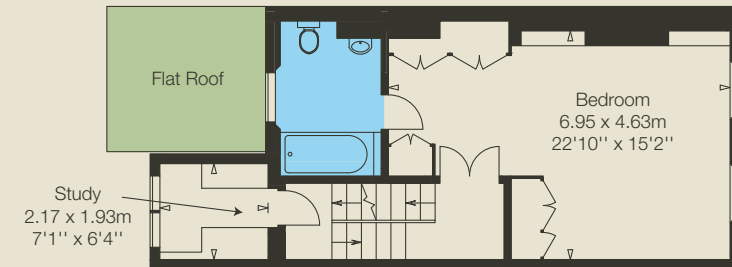
First Floor Half Landing



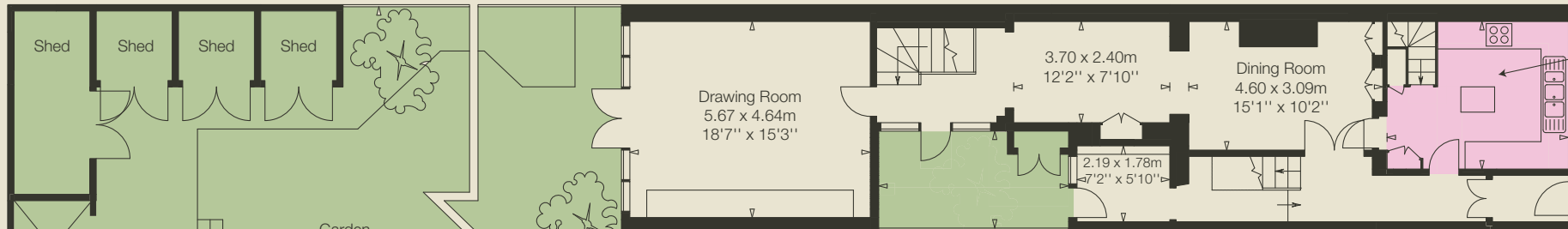
Third Floor



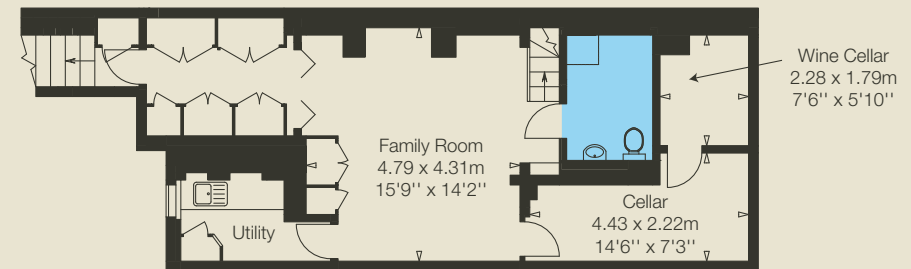
Second Floor



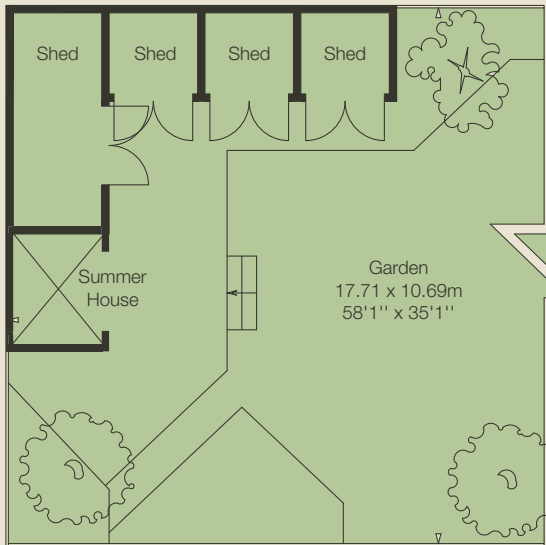
First Floor



Ground Floor



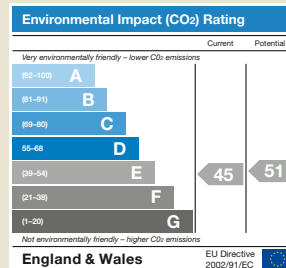
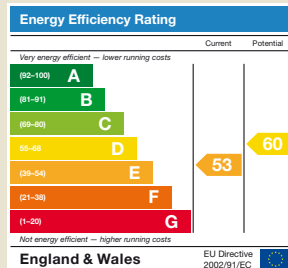
Lower Ground Floor



Garden  
17.71 x 10.69m  
58'1" x 35'1"

# Soames

Victoria Soames – Contact London  
26 Old Church Street London SW3 5BY  
020 7351 3311  
www.soameslondon.com



Victoria Soames Ltd., for themselves and for the vendor of this property, whose agents Victoria Soames Ltd., are, give notice that 1. These particulars do not constitute any part of an offer or contract. 2. All statements contained in these particulars as to this property are made without responsibility on the part of Victoria Soames Ltd., or the vendor. 3. None of the statements contained in these particulars as to this property are relied on as statements of representations of fact. 4. Any intending purchaser must satisfy himself by inspection or otherwise as to the correctness of each of the statements contained in these particulars. 5. The vendor does not make or give, and neither Victoria Soames Ltd., nor any person in the employ of Victoria Soames Ltd., has any authority to make or give any representation or warranty whatever in relation to this property. May 2010. JW/MA/6988 Photography and brochure by cgpdesign.com 020 7222 7222