

1 Anderson Street

CHELSEA SW3



1 Anderson Street

CHELSEA SW3

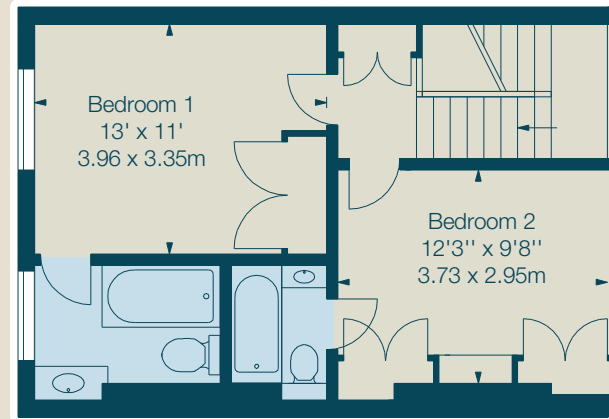
A bright and well presented first and second floor maisonette, with the benefit of the freehold of this converted period terraced house. Anderson Street is well situated for access to the amenities and transport links of the King's Road and Sloane Square.

ACCOMMODATION

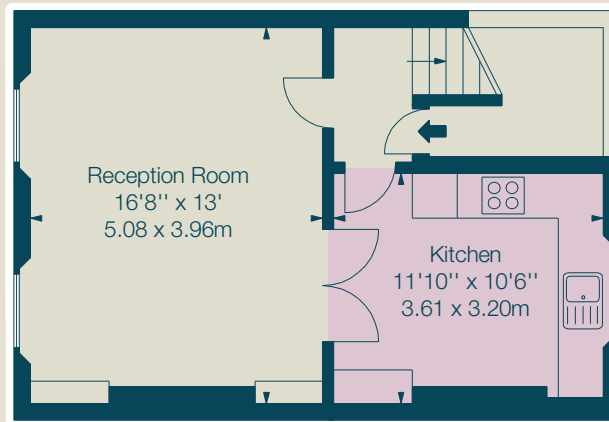
Entrance Hall
Reception Room
Kitchen
2 Double Bedrooms with en suite Bathrooms

TERMS

Tenure: Freehold
Price: £950,000 subject to contract

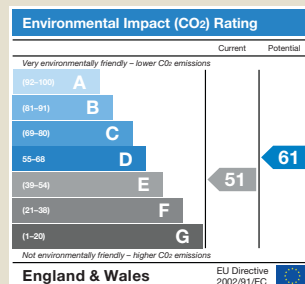
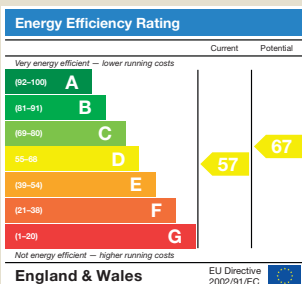


Second Floor



First Floor

APPROXIMATE GROSS INTERNAL AREA
75.25 sq m – 810 sq ft



Victoria Soames Ltd. and Russell Simpson, for themselves and for the vendor of this property, whose agents Victoria Soames Ltd. and Russell Simpson, are, give notice that 1. These particulars do not constitute any part of an offer or contract. 2. All statements contained in these particulars as to this property are made without responsibility on the part of Victoria Soames Ltd. and Russell Simpson, or the vendor. 3. None of the statements contained in these particulars as to this property are relied on as statements of representations of fact. 4. Any intending purchaser must satisfy himself by inspection or otherwise as to the correctness of each of the statements contained in these particulars. 5. The vendor does not make or give, and neither Victoria Soames Ltd. and Russell Simpson, nor any person in the employ of Victoria Soames Ltd. and Russell Simpson, has any authority to make or give any representation or warranty whatever in relation to this property. October 2009. JW/BP/8863 Photography and brochure by cgpdesign.com 020 7222 7222

RUSSELL SIMPSON

5 Anderson Street, London SW3 3LU
020-7225 0277
Web: www.russellsimpson.co.uk
E-mail: info@russellsimpson.co.uk

Soames

Victoria Soames – Contact London
26 Old Church Street London SW3 5BY
020 7351 3311
www.soameslondon.com