



38 Queensdale Road
Notting Hill W11

Soames
Victoria Soames – Contact London

38 Queensdale Road Notting Hill W11

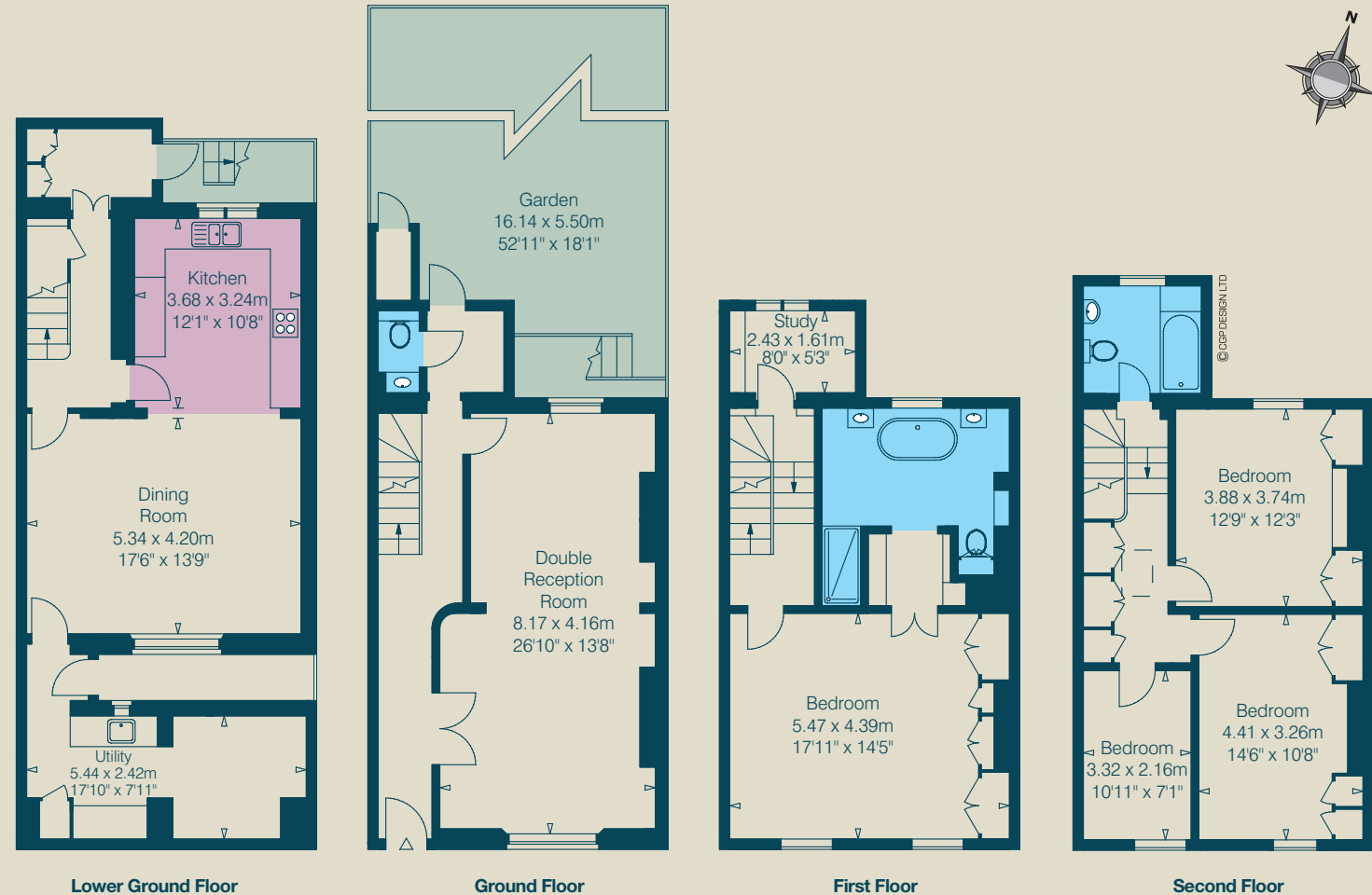
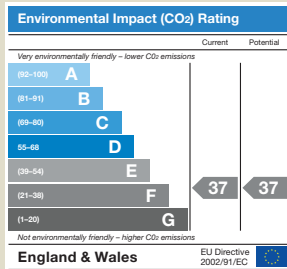
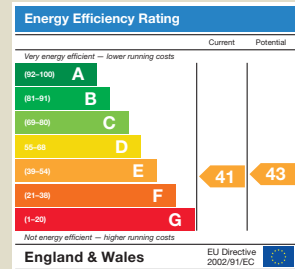
A wonderful family house set in this quiet street in Notting Hill. The house has a fantastic kitchen/dining room, as well as a lovely garden.



Entrance Hall : Double Reception Room
Kitchen/Dining Room : Master Bedroom with en suite Bathroom : 3 further double Bedrooms : Bathroom : Study : Utility Room
Garden

**£2,400 per week
Unfurnished**

Approximate Gross Internal Area
2,314 sq feet – 215 sq metres



Soames
Victoria Soames – Contact London

26 Old Church Street London SW3 5BY

020 7351 3311

www.soameslondon.com

Victoria Soames Ltd. and Contact London Ltd. for themselves and for the vendor of this property, whose agents Victoria Soames Ltd. and Contact London Ltd. are, give notice that 1. These particulars do not constitute any part of an offer or contract. 2. All statements contained in these particulars as to this property are made without responsibility on the part of Victoria Soames Ltd., Contact London Ltd. or the vendor. 3. None of the statements contained in these particulars as to this property are relied on as statements of representations of fact. 4. Any intending purchaser must satisfy himself by inspection or otherwise as to the correctness of each of the statements contained in these particulars. 5. The vendor does not make or give, and neither Victoria Soames Ltd., Contact London Ltd. nor any person in the employ of Victoria Soames Ltd. and Contact London Ltd., has any authority to make or give any representation or warranty whatever in relation to this property. June 2009. JW/7833 Photography & brochure by cgpdesign.com 020 7222 7222

