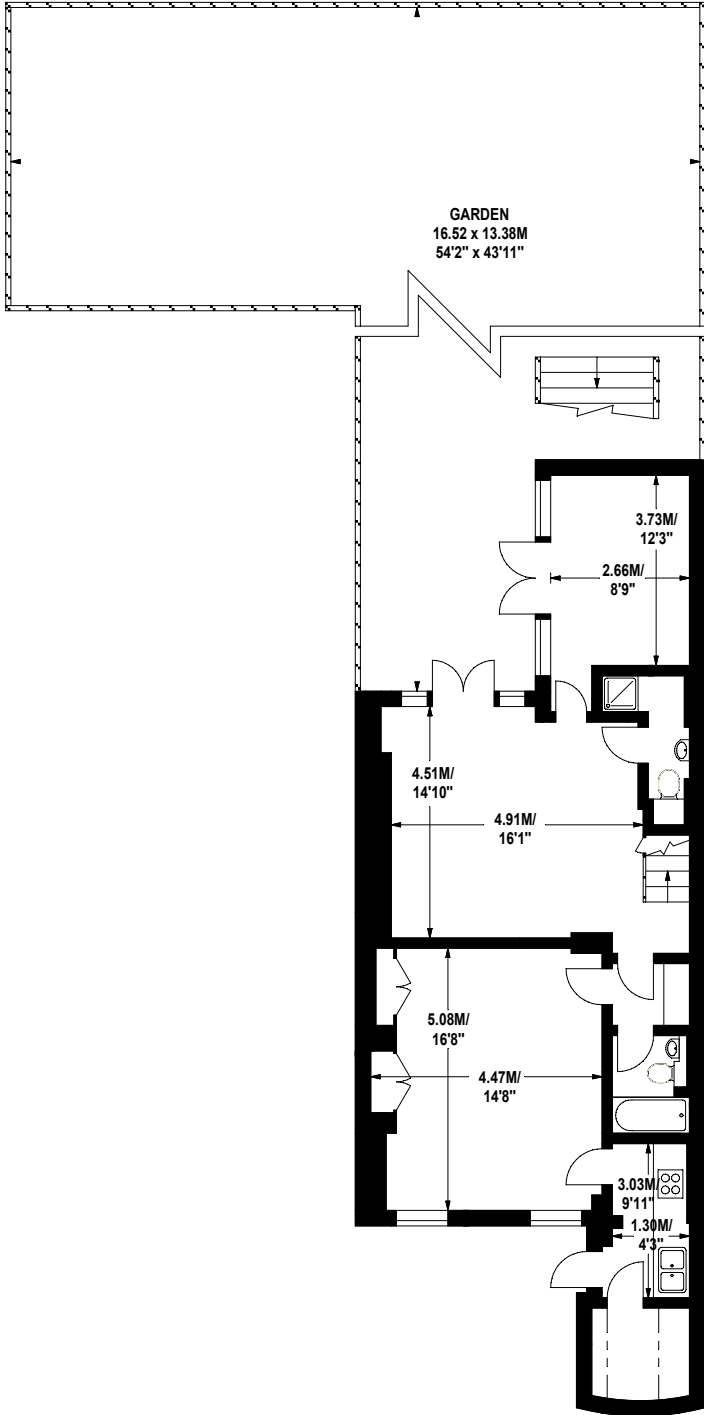


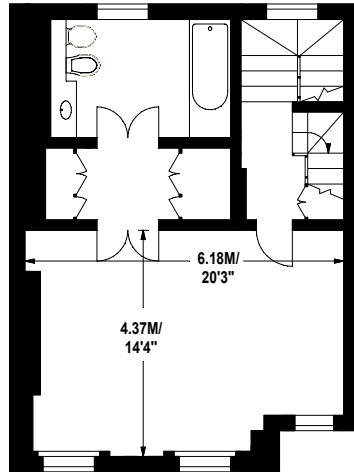
# Thurloe Place, SW7

Approximate gross internal area

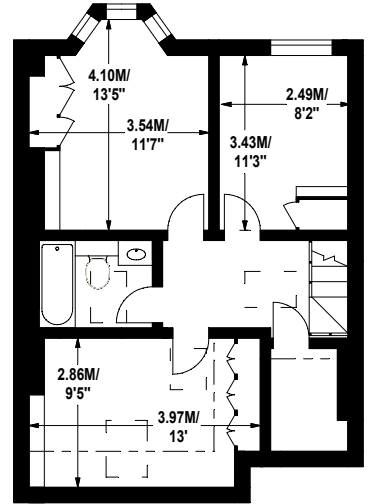
290 sq m / 3122 sq ft



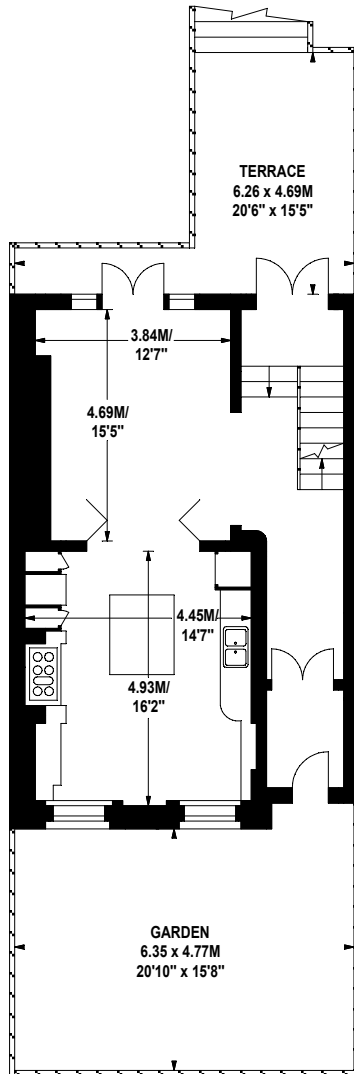
Lower Ground Floor



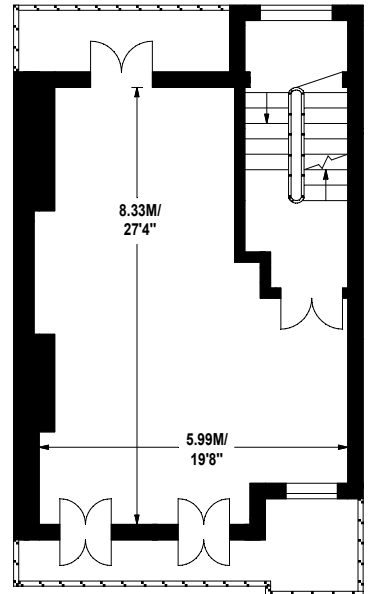
Second Floor



Third Floor



Raised Ground Floor



First Floor

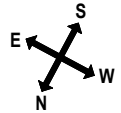


Illustration for identification purposes only, not to scale  
All measurements are maximum, and includes wardrobes and window bays where applicable  
Prepared by Mays Floorplans. Tel 079509 35588