

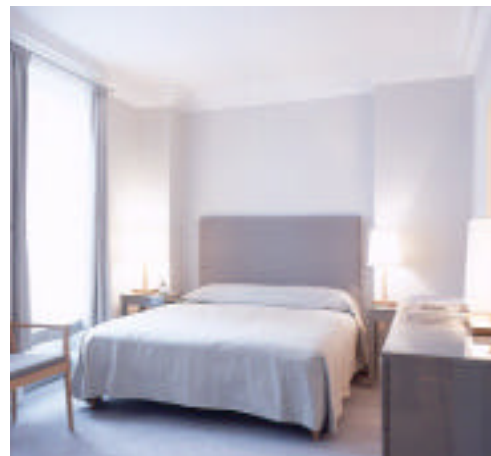
# domusnova<sup>®</sup>

lettings

## Hertford Street W1 from £2,000 per week



Metropolitan Apartments are adjacent to the famous Metropolitan hotel on Park Lane, within a converted town house on Hertford Street in the heart of Mayfair. The property consists of a total of eight two-bedroom apartments (minimum of 1100 sq. ft.), all comfortable and spacious with plenty of natural light and decorated in a contemporary style and benefit from private direct dial telephone number, fax with direct number (on request), voicemail, modem point, personal in-room safe, video entry phone, 24hr reception/concierge/security (at Metropolitan), closed circuit television system and remote control flat screen TV with ETV Interactive system. All are available for lets of three months or longer.



Available: Call for availability

Borough: Westminster

Domus Nova Ltd 37 Alexander Street, London W2 5NU. Telephone: (44) 020 7727 1717 Facsimile: (44) 020 7727 2030 Web site: [www.domusnova.com](http://www.domusnova.com)  
Registered in England No.3059387. VAT No. 672 5166 26.

" The information given in these particulars is intended to help you decide whether you wish to view this property and to avoid wasting your time in viewing unsuitable properties. We have tried to make sure that these particulars are accurate, but to a large extent we have to rely on what the seller tells us about the property. We do not check every single piece of information ourselves as the cost of doing so would be prohibitive and we do not wish to unnecessarily add to the cost of moving house."

" Once you find the property you want to buy, you will need to carry out more investigations into the property than it is practical or reasonable for an estate agent to do when preparing sales particulars. For example, we have not carried out any kind of survey of the property to look for structural defects and would advise any homebuyer to obtain a surveyor's report before exchanging contracts. If you do not have your own surveyor, we would be pleased to recommend one. We have not checked whether any equipment in the property (such as central heating) is in working order and would advise homebuyers to check this. You should also instruct a solicitor to investigate all legal matters relating to the property ( e.g. car-pets, curtains etc) will be included in the sale."